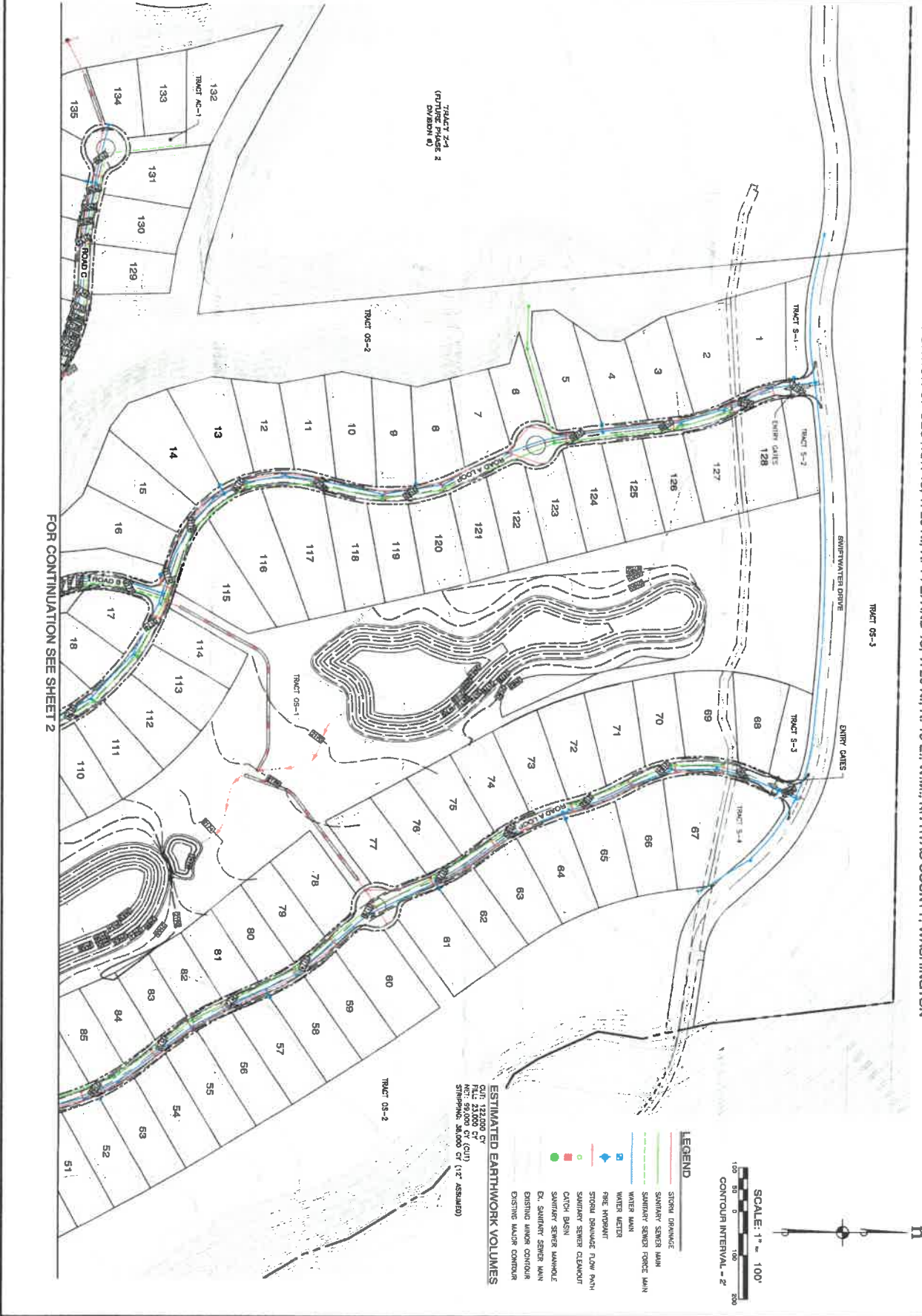


A PORTION OF SECTION 13, T. 20 N., R. 14 E. AND 18, T. 20 N., R. 15 E., W.M., KITITAS COUNTY, WASHINGTON



FOR CONTINUATION SEE SHEET 2

TRACT 2-1
 (FUTURE PHASE 2
 DIVISION 8)

ESTIMATED EARTHWORK VOLUMES
 CUT: 122,000 CY
 FILL: 23,000 CY
 TOTAL: 145,000 CY
 (1% ASSUMED)

LEGEND

- STORM DRAINAGE
- WATER MAIN
- FIRE HYDRANT
- STORM DRAINAGE FLOW PATH
- CATCH BASIN
- EX. SANITARY SEWER MAIN
- DISTING. MAJOR CONDUIT
- WATER METER
- FIRE HYDRANT
- STORM DRAINAGE FLOW PATH
- CATCH BASIN
- EX. SANITARY SEWER MAIN
- DISTING. MAJOR CONDUIT



DATE PLOTTED	1/24/2022
DATE PRINTED	1/24/2022
DATE OF LAST REVISION	1/24/2022
DATE OF THIS REVISION	1/24/2022
DATE OF PREVIOUS REVISION	1/24/2022
DATE OF NEXT REVISION	1/24/2022
DATE OF PREVIOUS REVISION	1/24/2022
DATE OF NEXT REVISION	1/24/2022

SUNCADIA RESORT LLC
 PHASE 2 DIVISION 7
 COMPOSITE UTILITY PLAN
 WASHINGTON

ES&M CONSULTING ENGINEERS, LLC
 13400 2nd Ave S, Suite 200
 Federal Way, WA 98003
 www.esmce.com

Civil Engineering | Land Surveying | Land Planning
 Public Works | Project Management | Landscape Architecture

NO.	DATE	BY	DESCRIPTION
1	1/24/2022	ES&M	ISSUED FOR PERMIT
2	1/24/2022	ES&M	ISSUED FOR PERMIT

